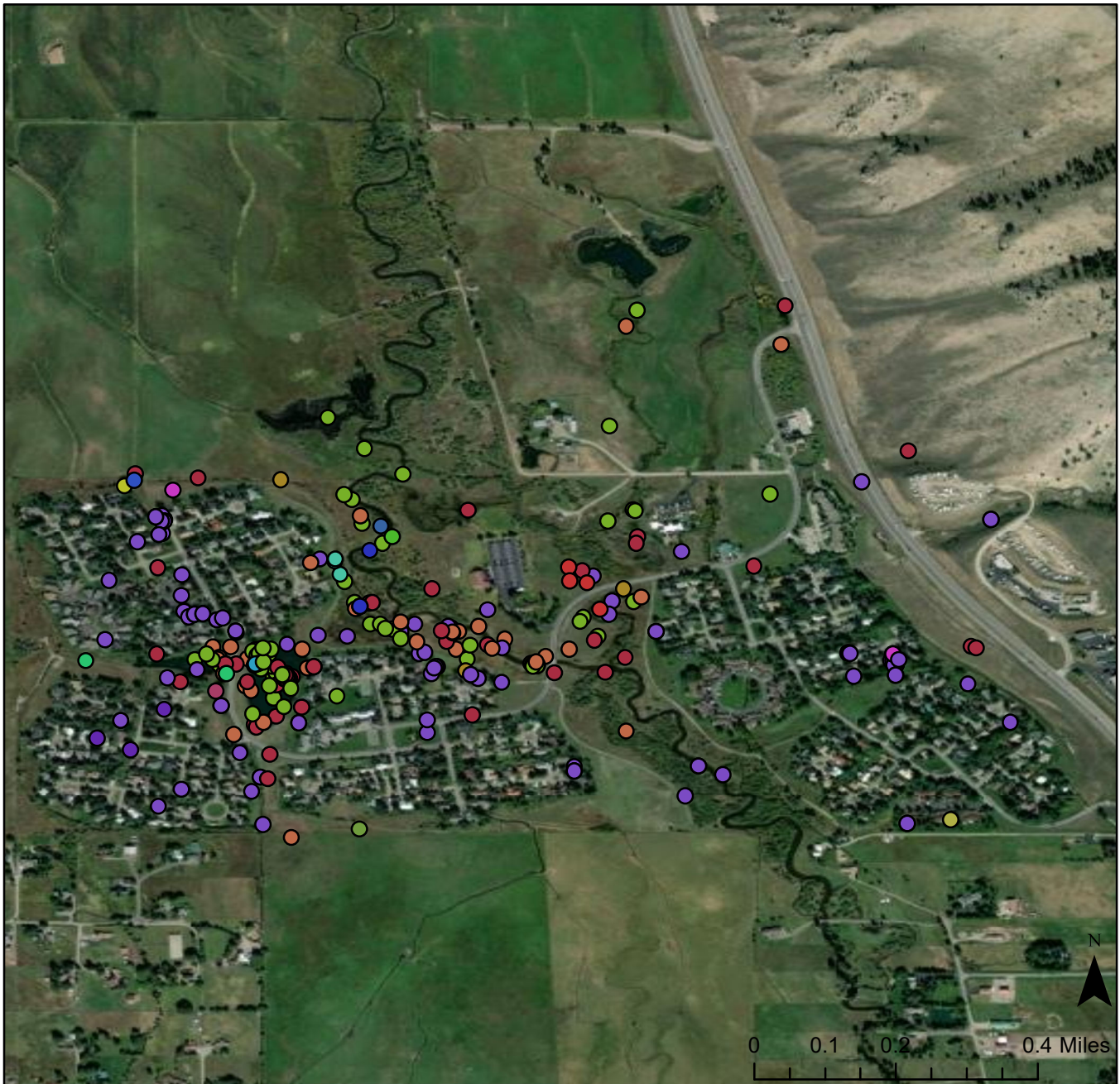


SGCN Data 2016-Present Rafter J Neighborhood



JACKSON HOLE



WILDLIFE
FOUNDATION

20 WY Species of Greatest Conservation Need have been Nature Mapped in the Rafter J Neighborhood. The wide setback of development from Flat Creek, healthy riparian zone, and habitat restoration area have contributed to preservation of a functioning ecosystem within the neighborhood.