



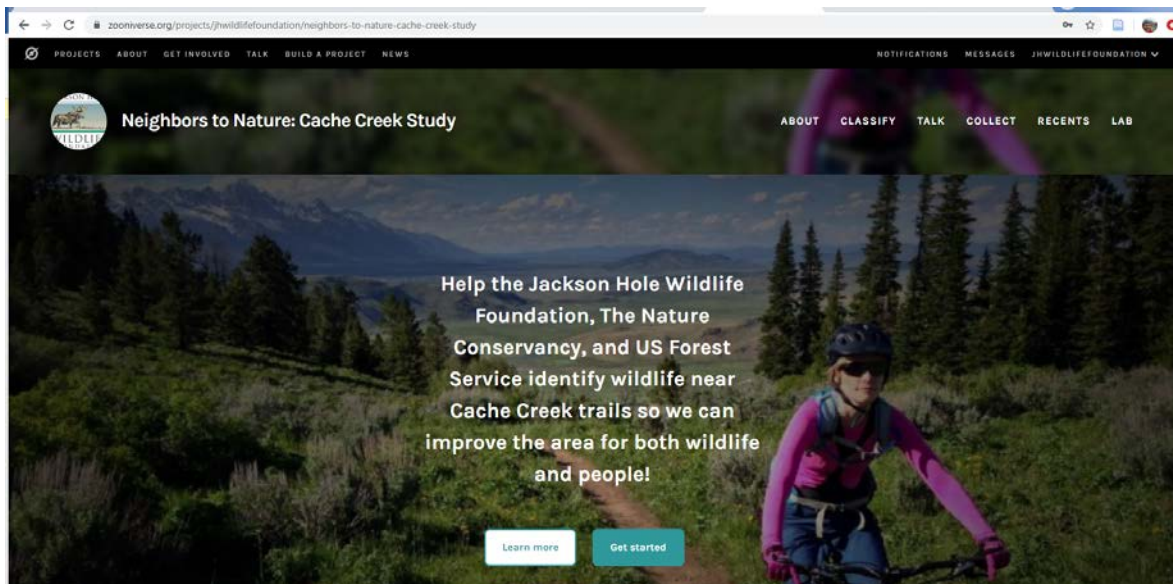
Neighbors to Nature: Cache Creek Study

Zooniverse Tutorial, Spring 2020

Trevor Bloom¹, Courtney Larson¹, Kate Gersh² and Kyle Kissock²

1. The Nature Conservancy, Wyoming

2. Jackson Hole Wildlife Foundation



Ground Rules

- 1) This is a private project, and a private invitation to you, which means that we ask you to not share the URL for this project or photos from this project with anyone who is not directly involved with Nature Mapping Jackson Hole, Friends of Pathways or The Nature Conservancy's Wyoming Office.
- 2) This project contains sensitive information. You cannot screenshot or save any photos, especially of humans or wildlife.
- 3) You cannot classify photos from any project in Zooniverse, besides the Neighbors to Nature: Cache Creek Study project with this Login ID.
- 4) You recognize this imagery will be used for scientific study, and that you did your best to accurately classify every photo to the best of your ability.



Neighbors to Nature: Cache Creek Study

Zooniverse Tutorial, Spring 2020

Trevor Bloom¹, Courtney Larson¹, Kate Gersh² and Kyle Kissock²

1. The Nature Conservancy, Wyoming

2. Jackson Hole Wildlife Foundation

Welcome to the Neighbors to Nature: Cache Creek Study and thank you for your participation as a citizen scientist on this exciting research project. Read and follow the steps below to ensure accurate observations, and please take note of any questions or comments for us to improve this field guide over time. Your participation is key to the success of this project and the conservation of the Greater Cache Creek area!

1) First Step: go to homepage and **Register**

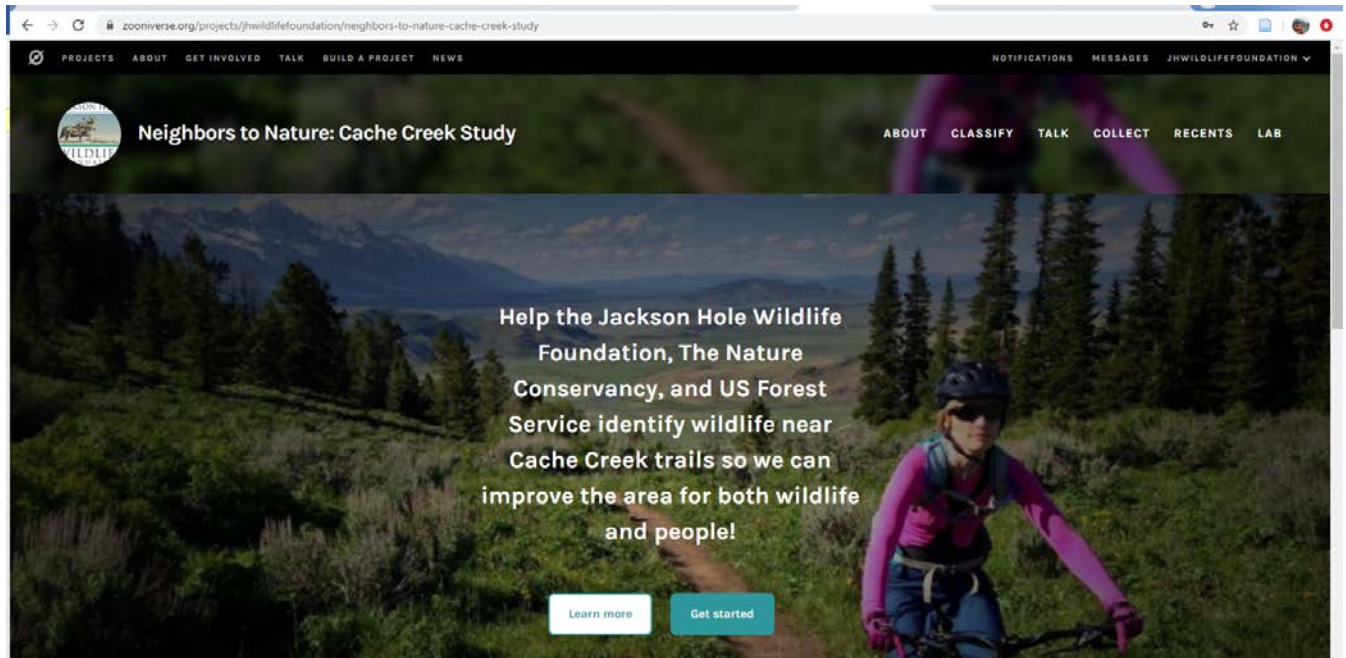
<https://www.zooniverse.org/projects/jhwildlifefoundation/neighbors-to-nature-cache-creek-study>

- Click Register on the top right of the page
- Enter a new username and password

TASK	TUTORIAL	
Nothing here	Deer, mule	Human (skier/snowboarder)
Ant	Deer, white-tail	Lynx
Beaver, black	Dog, domestic	Moose
Beaver, grizzly	Elk	Mountain lion
Beaver	Fox, red	Porcupine
Bird (ground)	Goat, mountain	Waboon
Bird (other)	Horse	Sheep, bighorn
Bird (raptor)	Human (cyclist)	Skunk
Bird (songbird or woodpecker)	Human (horseback rider)	Small mammals
Elk	Human (other)	Vehicle
Bobcat	Human (pedestrian)	Weasel family
Coyote	Human (research team)	Wolf, gray




2) Click **Get Started:** on the Neighbors to Nature Homepage



3) **Begin Classifying:** this is the most important part, so please follow all instructions precisely

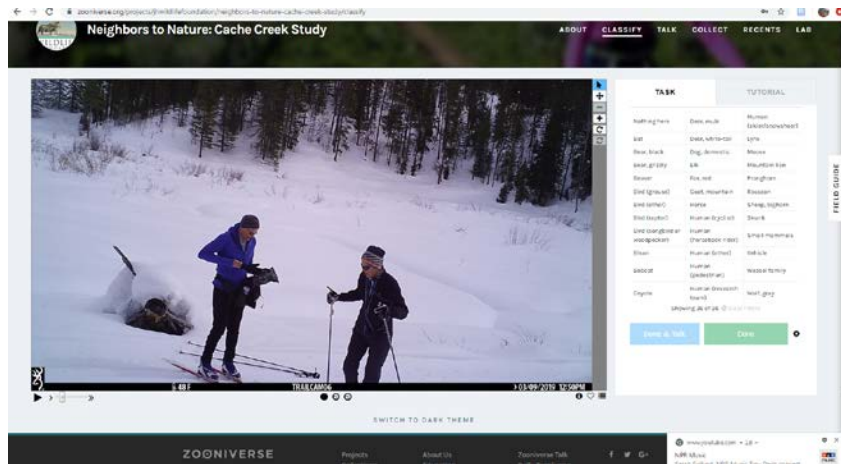
- a. Click CLASSIFY on the top right corner of the screen, or if you get lost go to the URL:

<https://www.zooniverse.org/projects/jhwildlifefoundation/neighbors-to-nature-cache-creek-study>

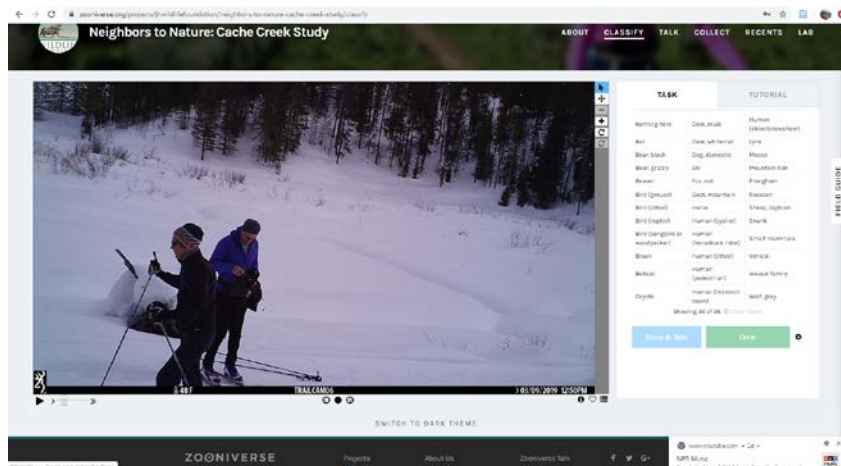
- b. An image will be displayed on the screen – these images are taken in a series so make sure you scroll or video through the entire series of photos- there are usually 3-5 in a series and up to 10+. You will make a single observation for the entire series. To scroll either click the PLAY  icon on the bottom left of the image to play the series as a video or click on circles below the image to see each one individually. For example:



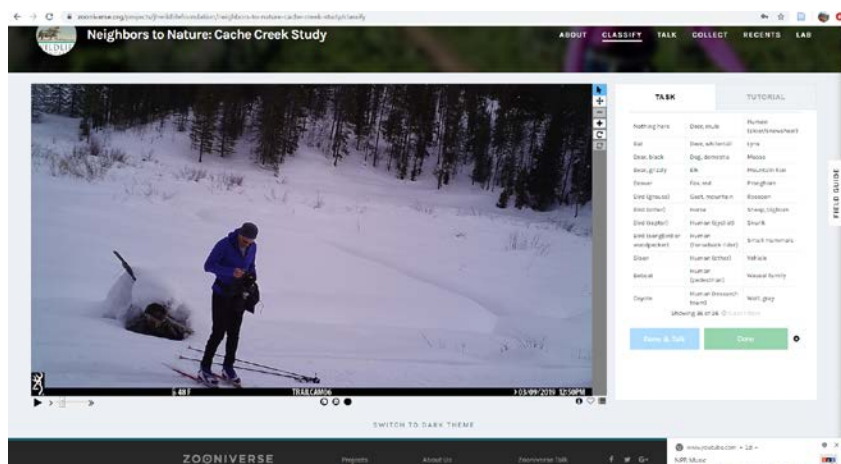
c. Image 1:



d. Image 2:

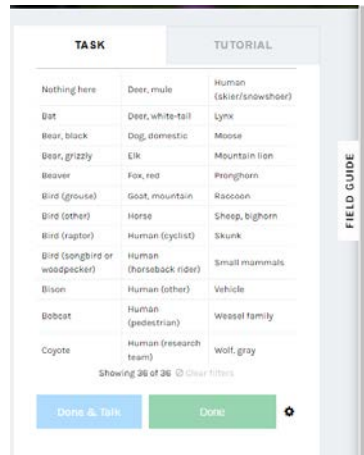


e. Image 3:

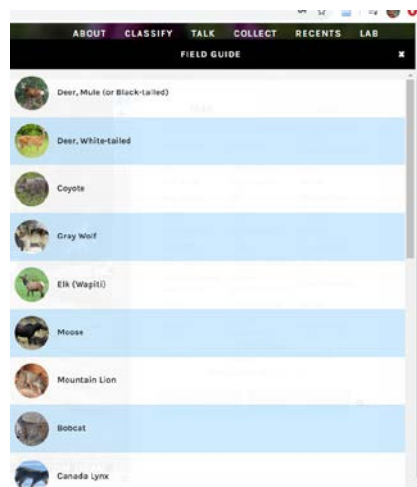




- f. Remember: you need to select ALL the wildlife and humans in the series of images, not just the first one you see. You can select one or multiple of the following options,



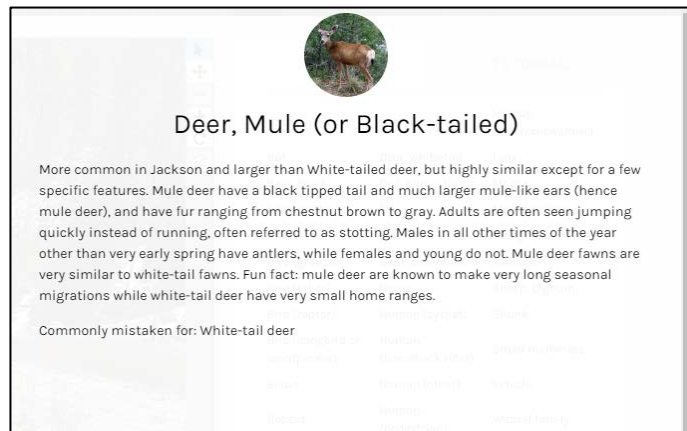
- g.
- h. If you have questions about the identification, click FIELD GUIDE on the right-side bar, and click any of the categories to find out more.



i.

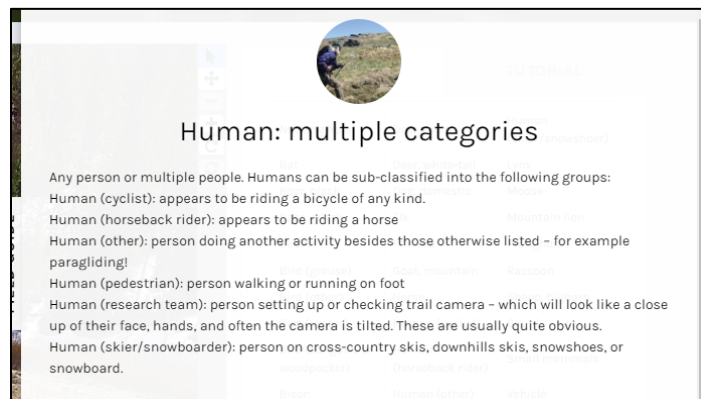


The Nature Conservancy



j. For Example:

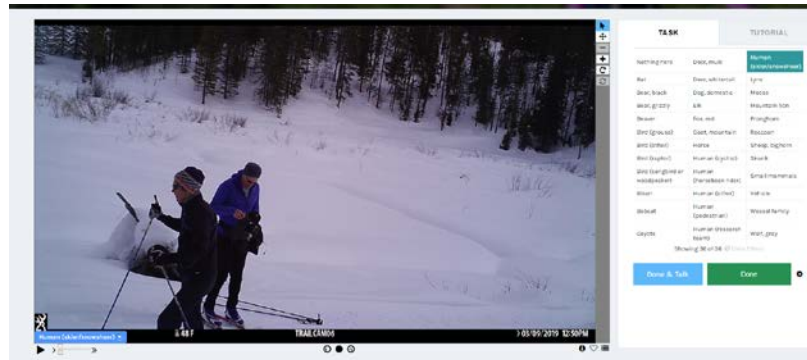
k. Or in this example, Humans:



l. Now back to the series of images above...close out of the Field Guide

m. For this series select Human (skier/snowboarder) and then it will ask HOW MANY. Because you saw a total of two people in the series, click 2 and then IDENTIFY

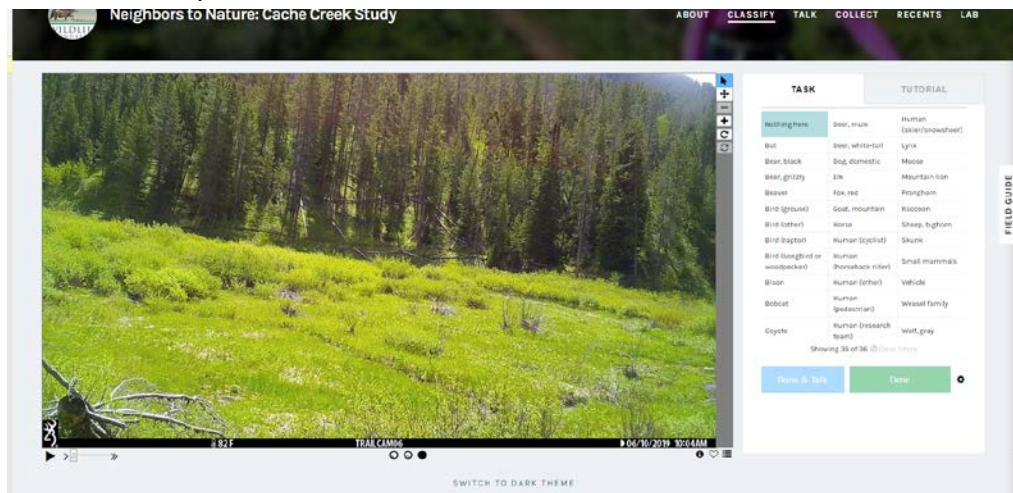
n. The identification will now appear as a blue text box on the bottom left of the image, where you could delete by clicking the X if you made a mistake



- o.
- p. Now double check your identification and make sure there are no others to make, then once you are certain...
- q. **Click DONE**
- r. **This will take you to another series of images**



- 4) **NOTHING HERE:** The most common images you will likely encounter will not contain any wildlife or humans, as the cameras are often triggered by wind, rain, snow or blowing vegetation.
- First, watch the entire series of images, and if there is nothing there, simply select NOTHING HERE, then IDENTIFY, and then once you double check: DONE**
 - A Classic example of **NOTHING HERE:**



C.

5) Multiple Wildlife or Humans in images

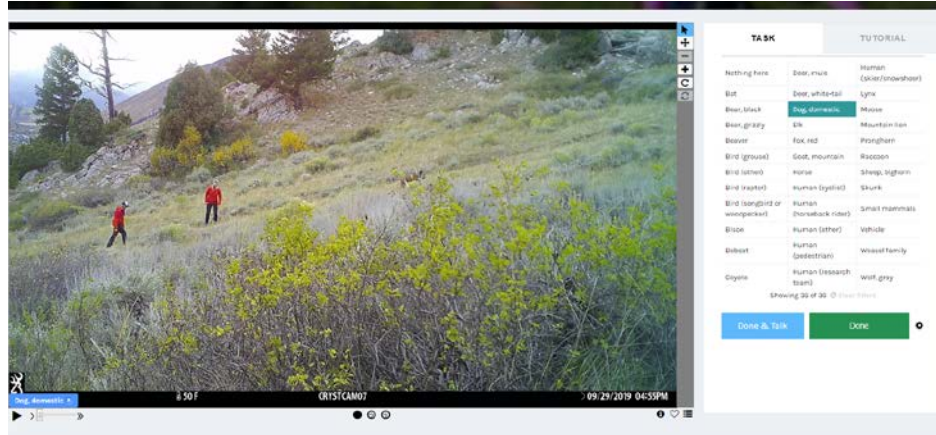
- Many photo series may contain more than one category of observations. It is your job to classify every category in each photo series.
- For example, the photo series below contains two Humans (pedestrian) and one Dog, domestic:



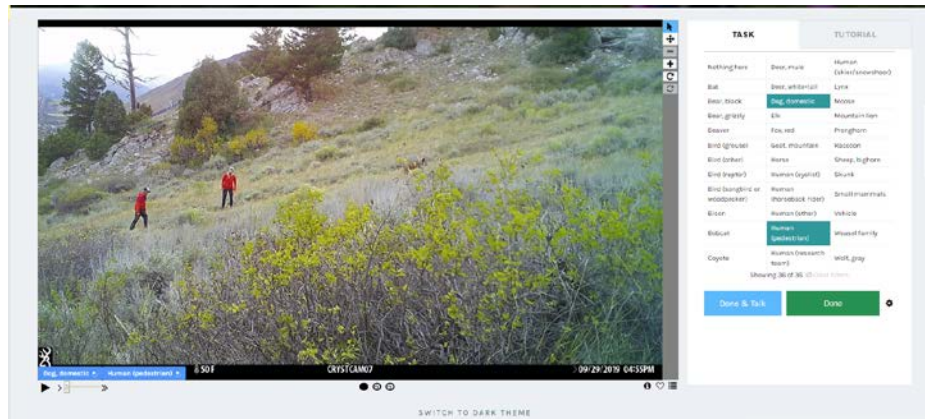
C.



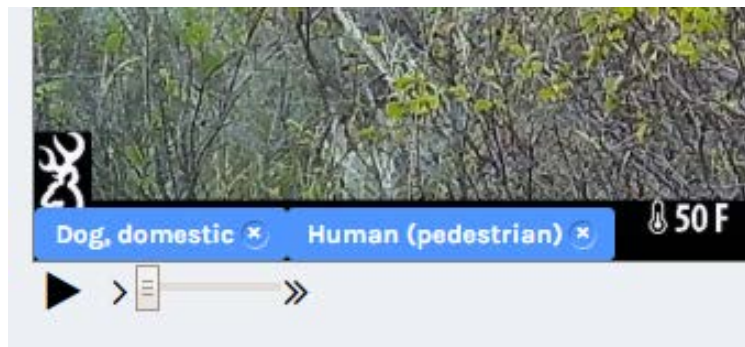
- d. So first select Dog, domestic, how many 1, and click Identify



- e. Then select Human (pedestrian), How Many – 2, and Identify



- f. You will now see two classifications as blue text boxes at the bottom of the image

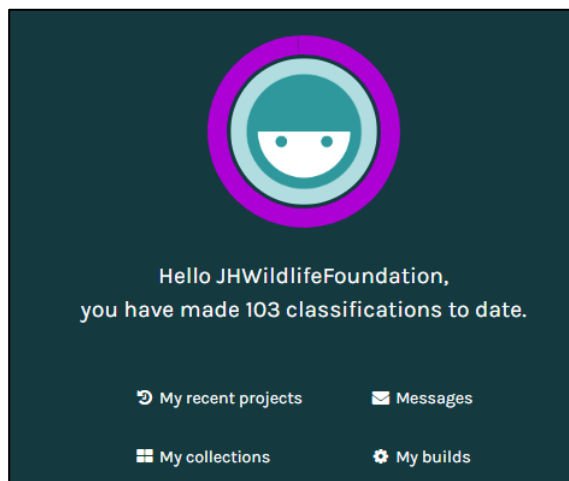
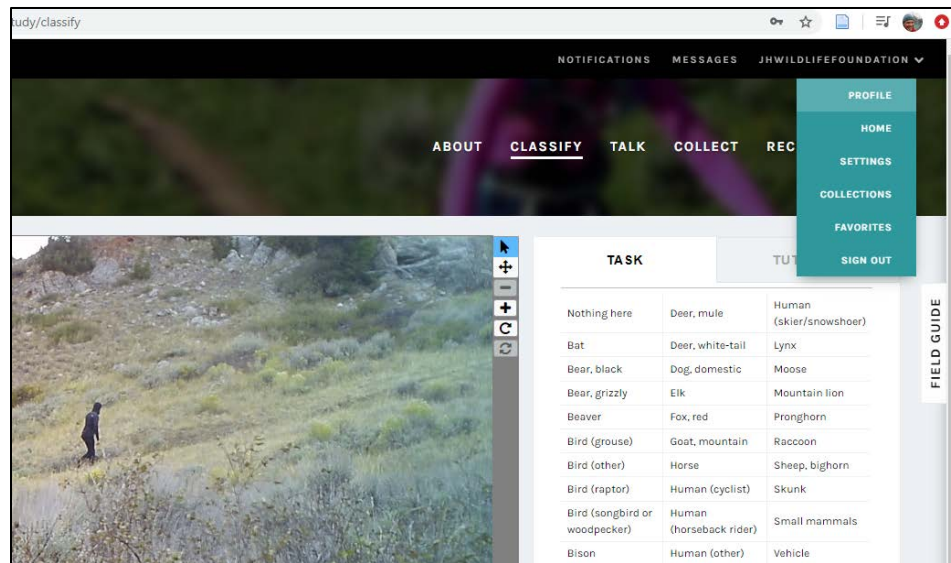


- g. Verify that you have identified all the Humans and Wildlife categories in the image and then select DONE



Checking your STATS

- h. Click on your username on the upper right corner of the screen, and click **PROFILE**:

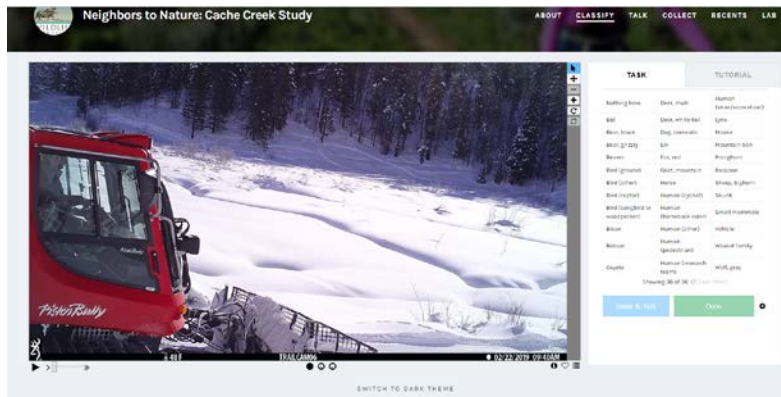


- i. Select Your STATS:
- j. With the above example, 103 classifications have been made to date by the “JHWildlifeFoundation” user account.





The Nature
Conservancy



Vehicle – Note, this is the groomer for the Game Creek Trail during winter.

Great job, thank you for the help and have fun vetting game camera imagery for Neighbors to Nature!

For questions regarding Neighbors to Nature: Cache Creek Study please contact:

Kate Gersh
Associate Director
Jackson Hole Wildlife Foundation
Kate@jhwildlife.org

OR

Trevor Bloom
Community Ecologist
The Nature Conservancy - Wyoming
trevor.bloom@tnc.org