

## Introduction

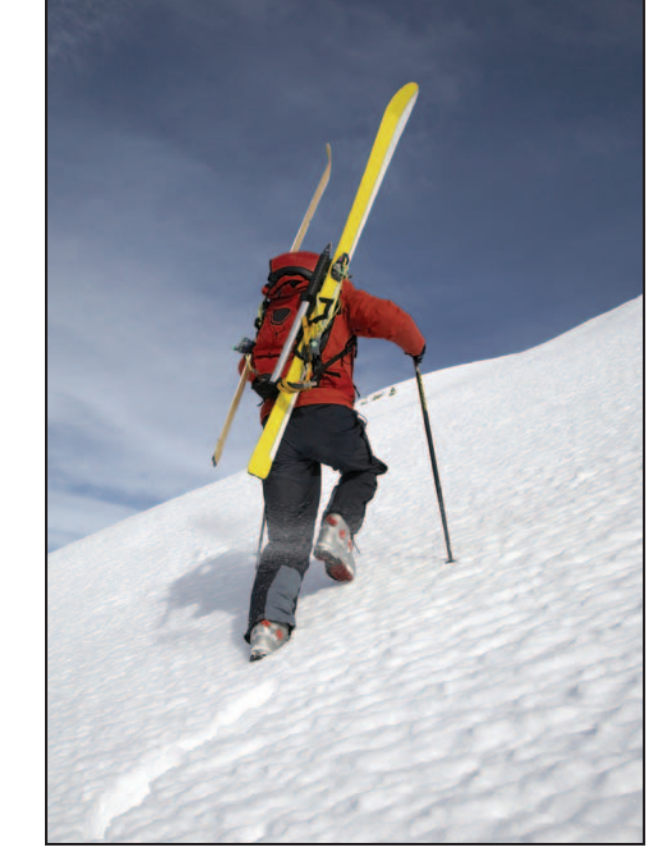
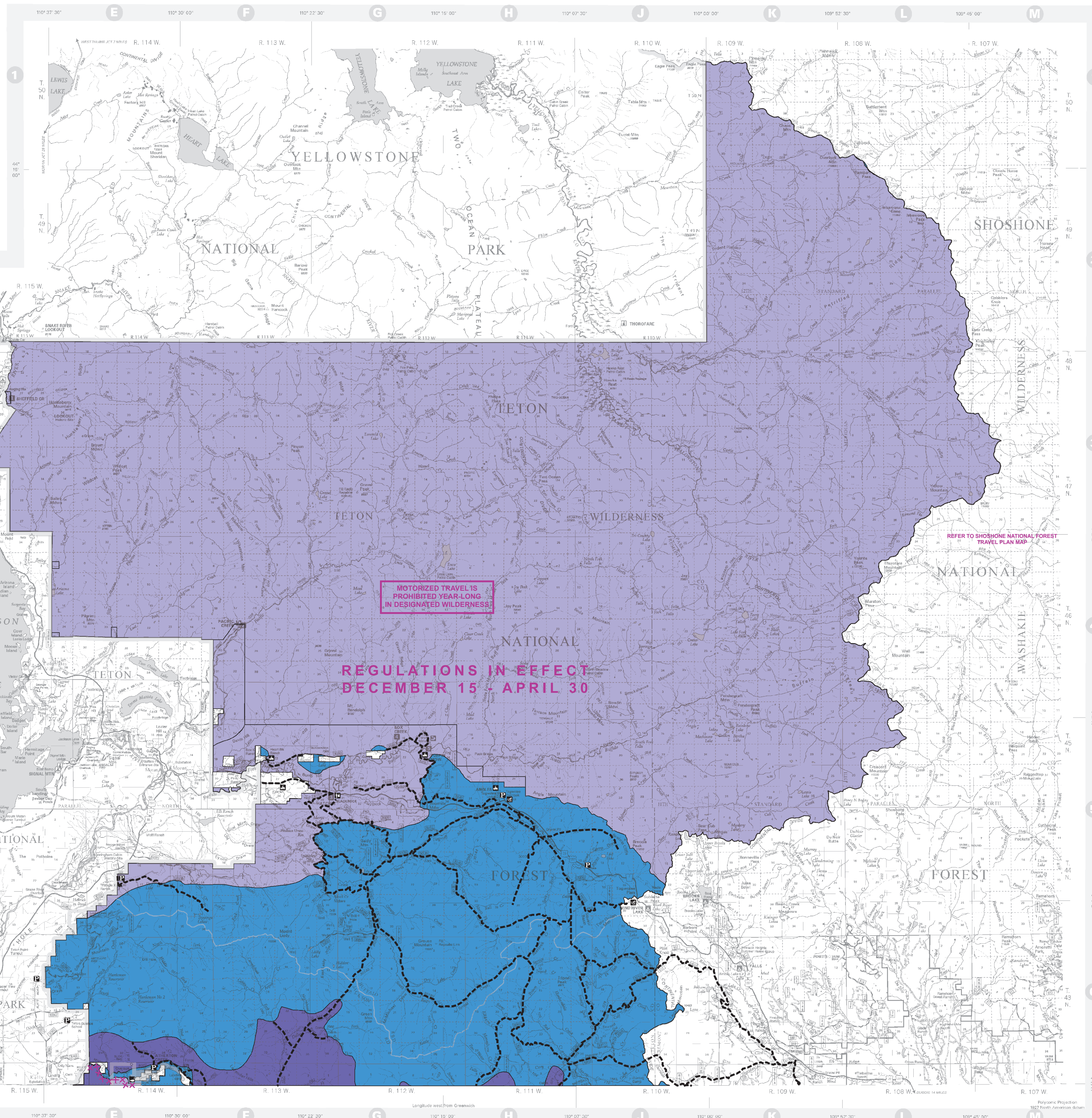
This Travel Plan describes winter travel opportunities on the Teton Division of the Bridger-Teton National Forests from December 1 – April 30. For more information regarding travel opportunities on the Teton Division from April 30 – November 30 or travel opportunities on the Bridger Divisions (East and West), maps are available at any District Ranger Office or the Supervisor's Office.

This map is intended to help the winter recreationist enjoy the Bridger-Teton National Forests safely while protecting natural resources. Additional closures or restrictions may be made at any time for resource protection or public safety. To avoid inconvenience, Forest visitors are encouraged to contact local Ranger District Offices for current travel information.

## Definitions

**OFF-ROAD VEHICLE (ORV)** – Any motorized vehicle designed for or capable of cross-country travel on or immediately over land, water, snow, sand, ice, marsh, swampland, or other terrain which would include, but not limited to such vehicles as four-wheel-drives, motorcycles, snowmobiles, amphibians, and air cushion vehicles.

**OVER-SNOW VEHICLE** – A self-propelled vehicle intended for travel primarily on snow, having a curb weight of not more than 1,000 pounds, driven by a track or tracks on contact with the snow, and steered by a ski or skis in contact with the snow.



# Bridger-Teton National Forests Teton Division

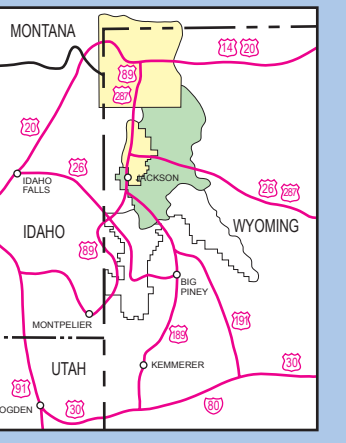
**Winter Travel Map**  
December 1 - April 30



**America's Great Outdoors**  
Wyoming 2010

Forest Service  
United States Department of Agriculture

### VICINITY MAP



Bridger-Teton National Forest  
Forest Supervisor's Office  
340 North Cache  
P.O. Box 1888  
Jackson, WY 83001  
(307) 739-5500  
TTY: (307) 739-5503  
www.fs.fed.us/brtnf

Big Piney Ranger District  
315 South Front Street  
P.O. Box 218  
Big Piney, WY 83113  
(307) 276-3375

Jackson Ranger District  
25 Rosencrans Lane  
P.O. Box 1689  
Jackson, WY 83001  
(307) 739-5400

Buffalo Ranger District  
Highway 26/287  
P.O. Box 278  
Moran, WY 83013  
(307) 543-2386

The U.S. Department of Agriculture (USDA) prohibits discrimination in all its programs and activities on the basis of race, color, national origin, sex, disability, and where applicable, age, marital status, political status, parental status, religion, sexual orientation, genetic information, political beliefs, reprisal, or because all or part of an individual's income is derived from any public assistance program. (See all prohibited bases apply to all programs.) Persons with disabilities who require alternative means for communication of program information (Braille, large print, audiotape, etc.) should contact USDA TARGET Center at (202) 726-2606 (voice and TDD). In the case of discrimination, write to USDA, Director, Office of Civil Rights, 1400 Independence Avenue, S.W., Washington, D.C. 20250-9410, or call (800) 795-3272 (voice) or (202) 726-6802 (TDD). USDA is an equal opportunity provider and employer.

### Attention Backcountry Users...

Check backcountry conditions before you leave. Call the 24 hour Bridger-Teton National Forests avalanche hazard and forecast report. (307) 733-2664



www.jhavalanche.org

### Opportunities/Regulations For Use Areas/Identified Routes

	Vehicles Of 48" Width Or More	Two-Wheeled Motorized Vehicles	Over-Snow Vehicles	ATVs	All Non-Motorized Uses	Purpose of Restriction
	Prohibited	Prohibited	Permitted	Prohibited	Permitted	Routes are not accessible by wheeled vehicles
	Prohibited	Prohibited	Permitted on Identified Routes Only	Prohibited	Permitted on Identified Routes Only	Protection of wildlife on crucial big game winter ranges
	Prohibited	Prohibited	Prohibited	Prohibited	Bicycles are Prohibited in Wilderness	Wilderness and protection of wildlife on crucial big game winter ranges
	Prohibited	Prohibited	Permitted	Prohibited	Permitted	Travel is permitted within 50 yards either side of the identified route
	Prohibited	Prohibited	Prohibited	Prohibited	Permitted	Travel is restricted to the maintained width of the identified route

During the month of December, wheeled motor vehicles are allowed on designated routes as shown on the Summer Motor Vehicle Travel Use Map if the snow depth is not sufficient for over snow vehicle travel.

Compiled and constructed through automated methods in 2004 by the Interagency Pacific Region, Oregon, Utah, U.S. Geological Survey 10 Meter Digital Elevation Models (DEM's), and other source digital data.

Longitude west from Greenwich  
Polyconic Projection  
1927 North American datum

**Introduction**

This Travel Plan describes winter travel opportunities on the Teton Division of the Bridger-Teton National Forests from December 1 – April 30. For more information regarding travel opportunities on the Teton Division from April 30 – November 30 or travel opportunities on the Bridger Divisions (East and West), maps are available at any District Ranger Office or the Supervisor's Office.

This map is intended to help the winter recreationist enjoy the Bridger-Teton National Forest safely while protecting natural resources. Additional closures or restrictions may be made at any time for resource protection or public safety. To avoid inconvenience, Forest visitors are encouraged to contact local Ranger District Offices for current travel information.

**Definitions**

**OFF-ROAD VEHICLE (ORV)** – Any motorized vehicle designed for or capable of cross-country travel on or immediately over land, water, snow, sand, ice, marsh, swampland, or other terrain which would include, but not limited to such vehicles as four-wheel-drives, motorcycles, snowmobiles, amphibians, and air cushion vehicles.

**OVER-SNOW VEHICLE** – A self propelled vehicle intended for travel primarily on snow, having a curb weight of not more than 1,000 pounds, driven by a track or tracks in contact with the snow, and steered by a ski or skis in contact with the snow.



UNITED STATES DEPARTMENT OF AGRICULTURE  
FOREST SERVICE  
BRIDGER-TETON NATIONAL FOREST  
Winter Travel Restrictions  
Jackson and Buffalo Ranger Districts

Order Number: 04-03-300

**PROHIBITIONS:** Pursuant to Title 36 CFR 261.50 (a) and (b), the following acts are prohibited on National Forest System areas, roads and trails as described in this order, all within the Jackson and Buffalo Ranger Districts, Bridger-Teton National Forest as shown on the individual District's Winter Travel Map dated 2010, until further notice.

- Using any type of vehicle on a National Forest System Trail in violation of restrictions specified on the individual District's Winter Travel Map. 36 CFR 261.55 (b)
- Possessing or using any type of vehicle off National Forest System Roads or Trails in violation of restrictions specified on the individual District's Winter Travel Map. 36 CFR 261.56
- Going into or being upon an area depicted on the individual District's Winter Travel Map that is closed for the protection of property for wintering wildlife. 36 CFR 261.53 (f)

**EXEMPTIONS:** Pursuant to 36 CFR 261.50(e) the following persons are exempt from this order:

- Persons with a permit specifically exempting them from the effect of this order.
- Any Federal, State, or local officer, or member of an organized rescue or fire fighting force in the performance of an official duty.

**AREA DESCRIBED:** All areas, roads and trails as shown and identified on the attached individual District's Winter Travel Map, within the proclaimed and administrative boundaries of the Jackson and Buffalo Ranger Districts, Bridger-Teton National Forest.

**PURPOSE:** These restrictions are necessary to protect wintering wildlife habitat from the disturbance caused by motorized over snow vehicles, to protect natural resources (physical and biological) and separate motorized and non-motorized recreation uses to minimize user conflicts.

**IMPLEMENTATION:**

- This Order will be in effect when signed and shall remain in effect until further notice.
- A map identifying the areas, roads and trails is attached and made part of this Order.
- Any violation of this prohibition is punishable by a fine of not more than \$5000.00 for an individual or \$10,000.00 for an organization, and/or imprisonment for not more than six (6) months. (Title 16 USC 551, Title 18 USC 3571 (b)(6), Title 18 USC 3581 (b)(7)).
- This Order supersedes any previous orders prohibiting the same acts covered by this Order in described areas, roads and trails.
- Further information regarding this order may be obtained at the Bridger-Teton National Forest Supervisor's Office (307-739-5400) in Jackson, Wyoming.

Done at Jackson, Wyoming this 2<sup>nd</sup> day of February, 2010.

*Kruffy Hamilton*  
Carole Kruffy Hamilton  
Forest Supervisor  
Bridger-Teton National Forest

Order Number: 04-03-300



**Opportunities/Regulations For Use Areas/Identified Routes**

	Vehicles Of 48" Width Or More	Two-Wheeled Motorized Vehicles	Over-Snow Vehicles	ATVs	All Non-Motorized Uses	Purpose of Restriction
	Prohibited	Prohibited	Permitted	Prohibited	Permitted	Routes are not accessible by wheeled vehicles
	Prohibited	Prohibited	Permitted on Identified Routes Only	Prohibited	Permitted on Identified Routes Only	Protection of wildlife on crucial big game winter ranges
	Prohibited	Prohibited	Prohibited	Prohibited	Bicycles are Prohibited in Wilderness	Wilderness and protection of wildlife on crucial big game winter ranges
	Prohibited	Prohibited	Permitted	Prohibited	Permitted	Travel is permitted within 50 yards either side of the identified route
	Prohibited	Prohibited	Prohibited	Prohibited	Permitted	Travel is restricted to the maintained width of the identified route

During the month of December, wheeled motor vehicles are allowed on designated routes as shown on the Summer Motor Vehicle Travel Use Map if the snow depth is not sufficient for over snow vehicle travel.

REGULATIONS DISPLAYED ON THIS MAP APPLY UNLESS OTHERWISE MARKED ON THE GROUND. FOR MORE INFORMATION REGARDING TRAVEL REGULATIONS ON ROADS OUTSIDE THE BRIDGER-TETON NATIONAL FORESTS' JURISDICTION, CONTACT THE APPROPRIATE STATE OR COUNTY OFFICE.

CLOSURES TO THE SOUTH OF THE NORTHERN BOUNDARY OF THE GROS VENTRE WILDERNESS (marked as XXXX) ARE EFFECTIVE DECEMBER 1 THRU APRIL 30. CLOSURES TO THE NORTH OF THIS BOUNDARY ARE EFFECTIVE DECEMBER 15 THRU APRIL 30.

NOTE: TRAVELERS ACCESSING THE NATIONAL FOREST THROUGH THE NATIONAL ELK REFUGE ARE REQUIRED TO OBTAIN A PERMIT FROM THE REFUGE HEADQUARTERS ON E. BROADWAY.

MOTORIZED TRAVEL IS PROHIBITED YEAR-LONG IN DESIGNATED WILDERNESS

WILDERNESS

WILDERNESS

WILDERNESS

WILDERNESS

WILDERNESS

WILDERNESS

WILDERNESS

WILDERNESS

WILDERNESS

WILDERNESS

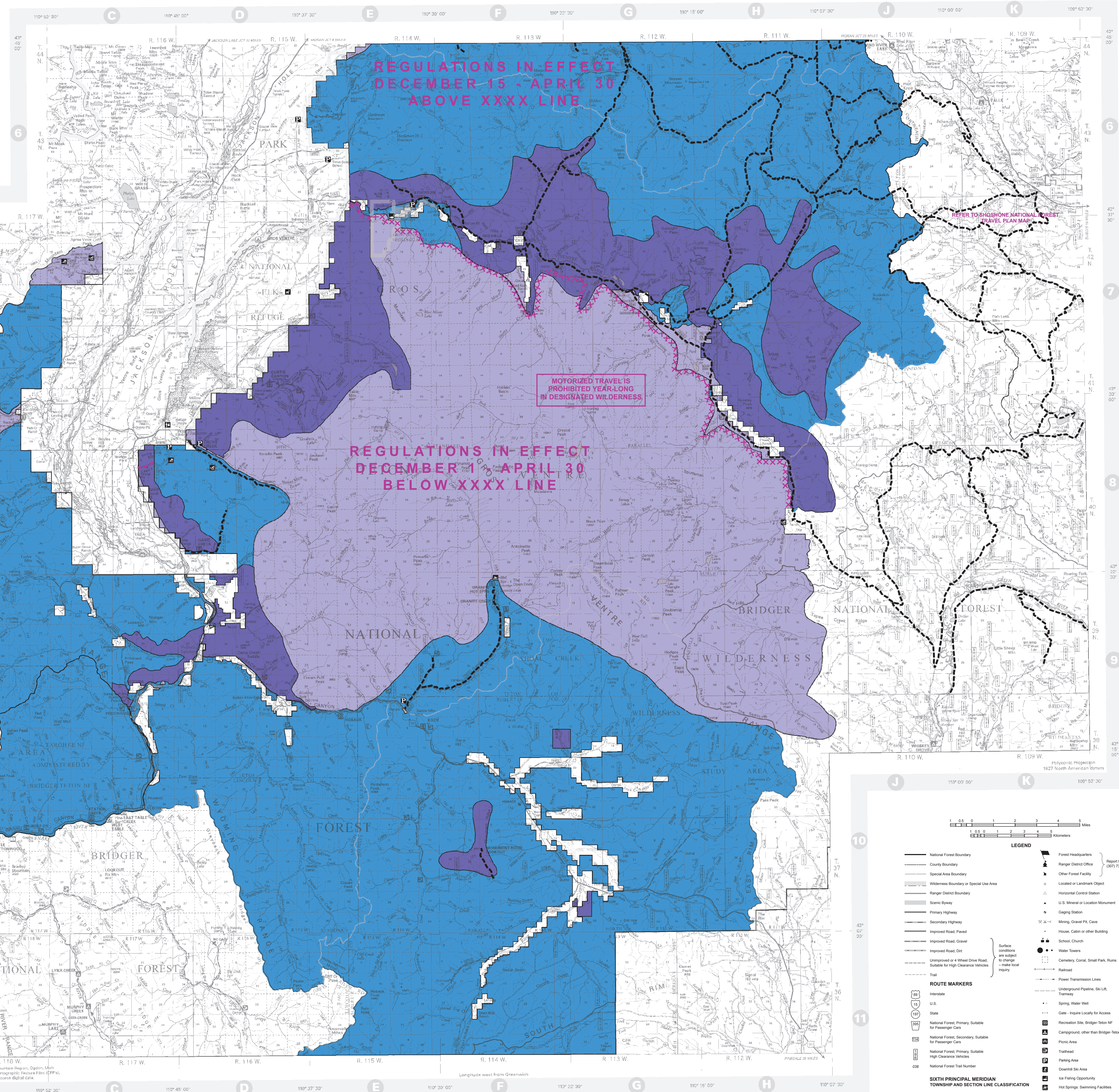
WILDERNESS

WILDERNESS

WILDERNESS

WILDERNESS

WILDERNESS



Compiled and constructed through automated methods in 2004 by the Information System, Ogden, Utah from 1:25,000 Revised Service 1:24,000 scale Primary Base 50' as northings, Cartographic Feature Files (CFP), U.S. Geographic Survey 10 Meter Digital Elevation Models (DEM), and other source digital data.

Scale: 1 0.5 1 2 3 4 5 Miles / 0.5 1 2 3 4 5 Kilometers

**LEGEND**

- National Forest Boundary
- County Boundary
- Special Area Boundary
- Wilderness Boundary or Special Use Area
- Ranger District Boundary
- Scenic Byway
- Primary Highway
- Secondary Highway
- Improved Road, Paved
- Improved Road, Gravel
- Improved Road, Dirt
- Unimproved or 4 Wheel Drive Road, Suitable for High Clearance Vehicles
- Trail
- Power Transmission Lines
- Underground Pipeline, Ski Lift, Tramway
- Spring, Water Well
- Gate - Inquire Locally for Access
- National Forest, Primary, Suitable for Passenger Cars
- National Forest, Secondary, Suitable for Passenger Cars
- National Forest, Primary, Suitable High Clearance Vehicles
- National Forest Trail Number
- Forest Headquarters
- Ranger District Office
- Other Forest Facility
- Located or Landmark Object
- Horizontal Control Station
- U.S. Mineral or Location Monument
- Gaging Station
- Mining, Gravel Pit, Cave
- House, Cabin or other Building
- School, Church
- Water Towers
- Cemetery, Corral, Small Park, Run
- Railroad
- Report from Here (807) 739-3636 or 911

**ROUTE MARKERS**

- Interstate
- U.S.
- State
- National Forest, Primary, Suitable for Passenger Cars
- National Forest, Secondary, Suitable for Passenger Cars
- National Forest, Primary, Suitable High Clearance Vehicles
- National Forest Trail Number
- Surveyed, Location Postable
- Surveyed, Location Approx.
- Surveyed, Protected
- Surface conditions are subject to change - make local inquiry

**SIXTH PRINCIPAL MERIDIAN TOWNSHIP AND SECTION LINE CLASSIFICATION**

- Surveyed, Location Postable
- Surveyed, Location Approx.
- Surveyed, Protected
- Hot Springs, Swimming Facilities
- National Elk Refuge
- Maintenance or Fireparty User X County Site Area